

Sublease Opportunity

OFFICE/WAREHOUSE/PRODUCTION

1619 Diamond Springs Road, Suites D, E, & F

JOHN LEE
ASSOCIATES



INDUSTRIAL & OFFICE REAL ESTATE

Airport Industrial Park - Virginia Beach, Virginia 23455

UP TO 30,000[±] SQ. FT.
AVAILABLE

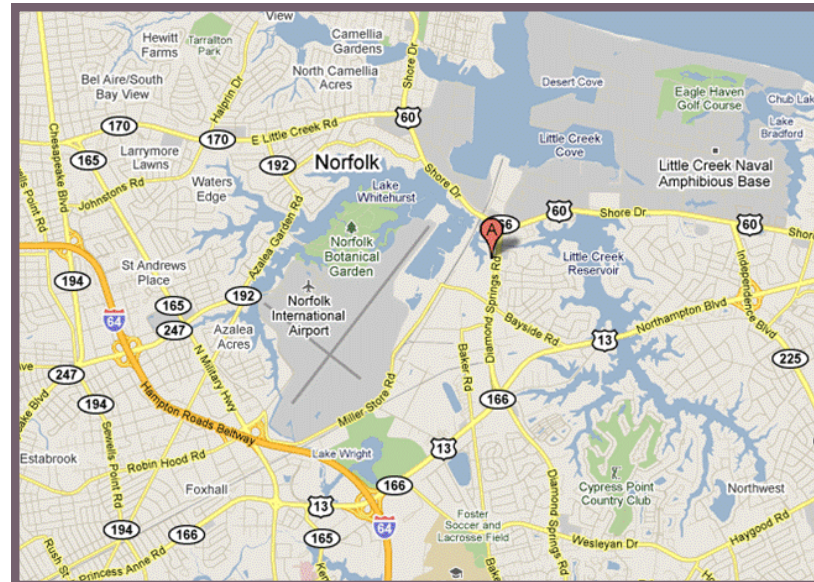
Suites D, E, & F

DIAMOND SPRINGS ROAD

LEASE RATE: \$10.50/SF, NNN | AVAILABLE: Within 60-days

Office/Warehouse/Production/Distribution

- Up to 30,000[±] SF available. Minimum divisible 10,000 SF.
- Location: Airport Industrial Park vicinity, close proximity to Little Creek Amphibious Base, Interstate 64, and Norfolk International Airport.
- Ceiling Height: 24' ±
- Loading: Four (4) dock-height doors with levelers, two (2) side-step van height doors, two (2) drive-in ramp door
- Construction: attractive block exterior, reinforced concrete floors, sprinkler system.
- Natural gas heat in warehouse and heavy 3-phase electrical service
- Notable Neighbors: Norfolk Bonded Warehouse, Mancon, WR Systems, NGK-Locke, Care-A-Lot Pet Supply.
- Ideal location for defense contractors.



FOR MORE INFORMATION PLEASE CONTACT:

John Lee, SIOR, President

Phone: (757) 490-3311

5520 Greenwich Road, Suite 207

johnlee@johnleeassociates.com

Virginia Beach, VA 23462

www.johnleeassociates.com

The information presented in this document was provided by sources believed reliable. Although we believe this information to be accurate, we make no guarantee, representations or warranties, expressed or implied, as to the accuracy of the information. References to sizes and dimensions are approximate. Said information is subject to errors, omissions or changes.



1619 Diamond Springs Road, Suites D, E, & F

Aerial



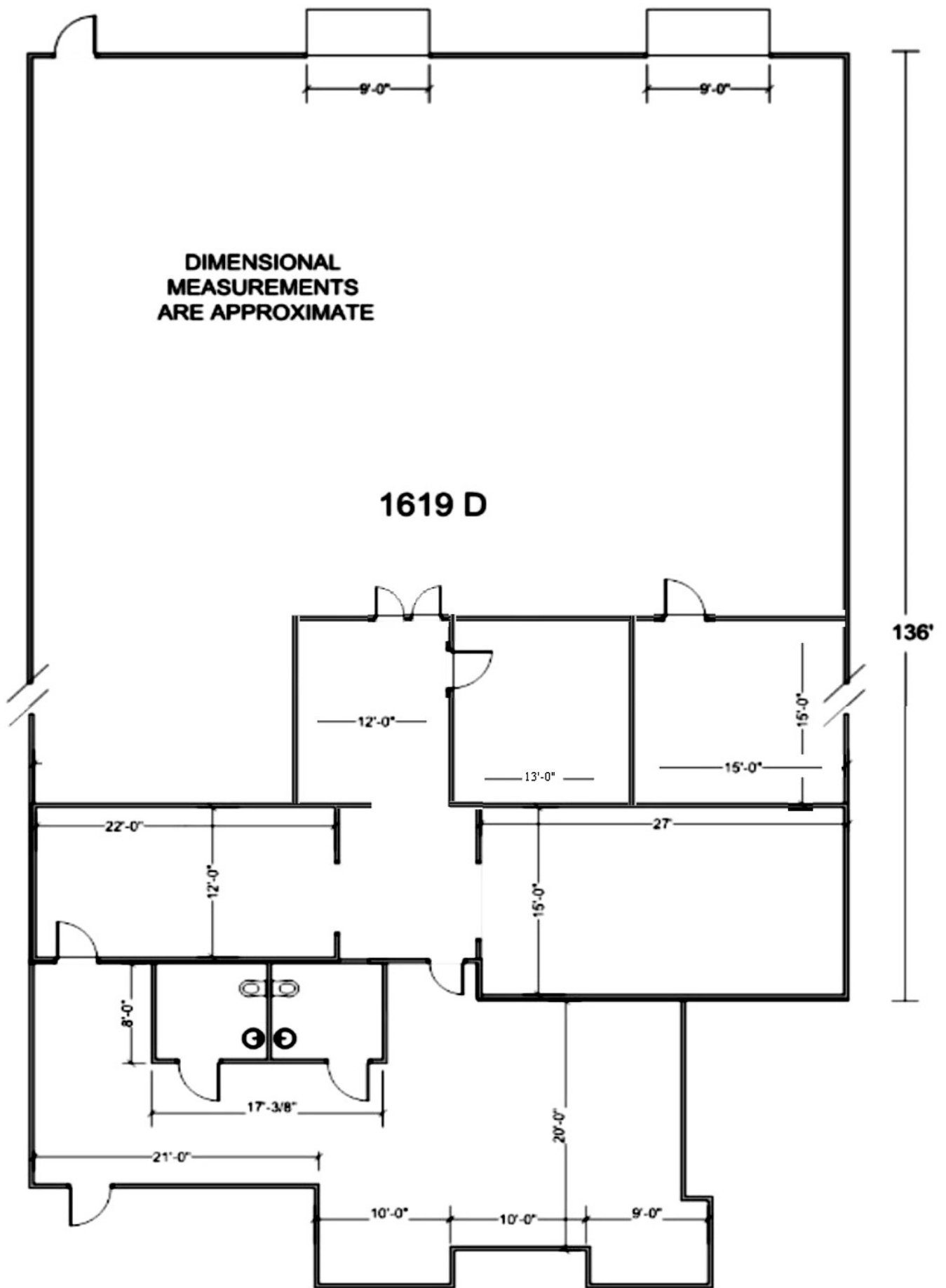
JOHN LEE
ASSOCIATES



INDUSTRIAL & OFFICE REAL ESTATE

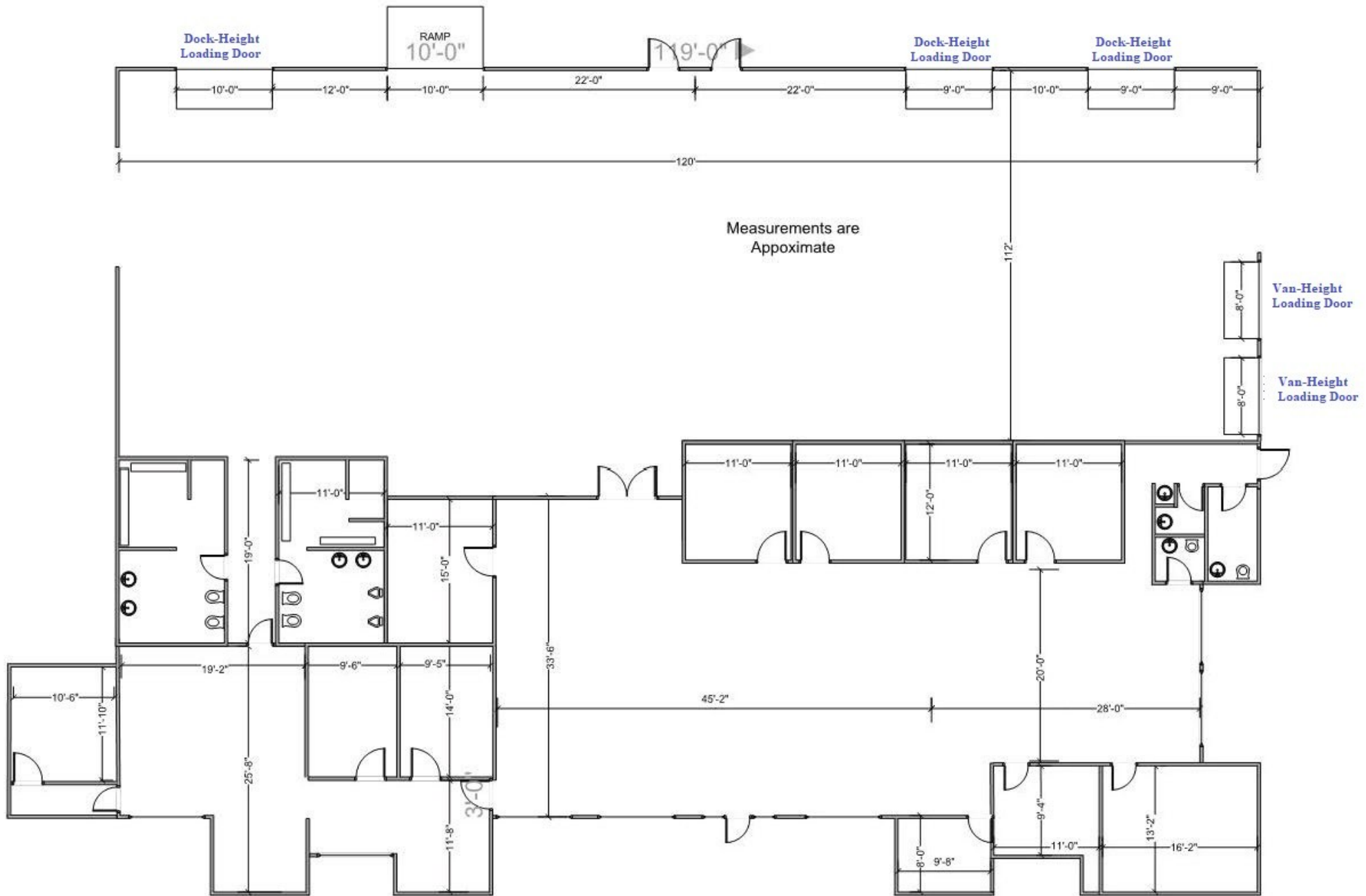
DIMENSIONAL
MEASUREMENTS
ARE APPROXIMATE

1619 D



Suites E & F (only)

NOTE: Not too scale. See warehouse dimensions.
Drawn to highlight office area.



Diamond Springs Road